

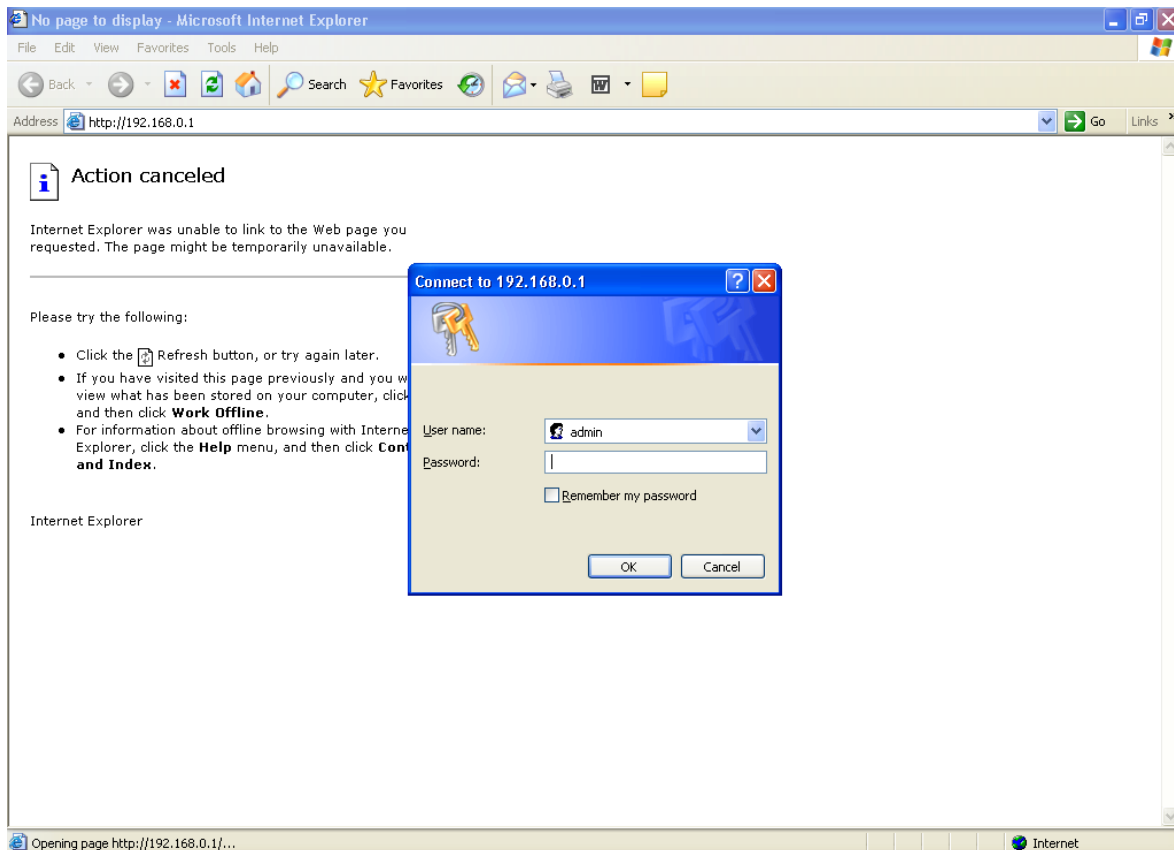
Atualização de Firmware

Este procedimento têm como propósito explicar como é feita a atualização de firmware nos equipamentos D-link Internet Server.

No exemplo que segue, utilizamos o equipamento, cujo modelo é DI-604.

Abra uma tela do navegador de **internet**:

- Na barra de endereços digite: <http://192.168.0.1> em seguida pressione a tecla **ENTER**.
- Abrirá uma caixa de conexão solicitando nome de usuário e senha.
- **Nome de usuário:** admin.
- **Senha:** em branco.
- Clique em **“Ok”**.





Tools:

- Clique na guia “Tools” em seguida em “Firmware”.

D-Link
Building Networks for People

DI-604
Ethernet Broadband Router

Home Advanced **Tools** Status Help

Admin
Time
System
Firmware
Misc.

Administrator Settings
Administrators can change their login password.

Administrator (The Login Name is "admin")

New Password [.....]

Confirm Password [.....]

User (The Login name is "user")

New Password [.....]

Confirm Password [.....]

Remote Management

Enabled Disabled

IP Address *

Port 8080

Apply Cancel Help



Firmware Upgrade:

- **Current Firmware Version:** Versão atual da firmware. Ex.: 2.20
- **Firmware Date:** Data da Firmware – Ex.: Fri, Aug 2003
- **Procurar:** Selecione a firmware que deseja atualizar, clique em “Apply”, em seguida em “Continue”.

The screenshot shows the web interface for a D-Link DI-604 Ethernet Broadband Router. The top navigation bar includes 'Home', 'Advanced', 'Tools' (highlighted), 'Status', and 'Help'. On the left sidebar, there are buttons for 'Admin', 'Time', 'System', 'Firmware' (highlighted), and 'Misc.'. The main content area is titled 'Firmware Upgrade' and contains the following text: 'There may be new firmware for your DI-604 to improve functionality and performance. [Click here to check for an upgrade on our support site.](#) To upgrade the firmware, locate the upgrade file on the local hard drive with the Browse button. Once you have found the file to be used, click the Apply button below to start the firmware upgrade.' Below this text, it displays 'Current Firmware Version: 2.20' and 'Firmware Date: Fri, 15 Aug 2003'. There is an empty text input field followed by a 'Procurar...' button. At the bottom right, there are three buttons: 'Apply' (with a green checkmark icon), 'Cancel' (with an orange 'X' icon), and 'Help' (with a red plus icon).