

DI-604 Configuração em modo PPPoE

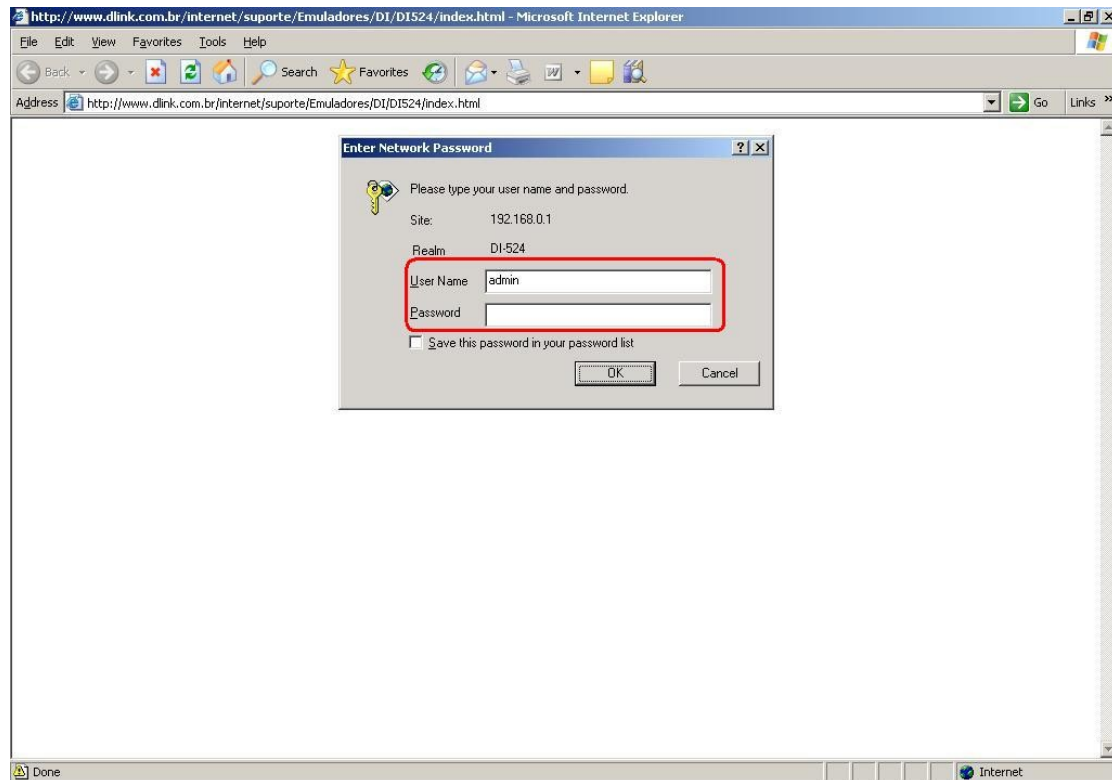
1. Acesse as configurações do Internet Server através do navegador de Internet:

Na barra de endereços do navegador digite: **192.168.0.1** e pressione a tecla **ENTER**. Abrirá uma caixa de texto solicitando nome de usuário e senha.

Nome de usuário: **admin**

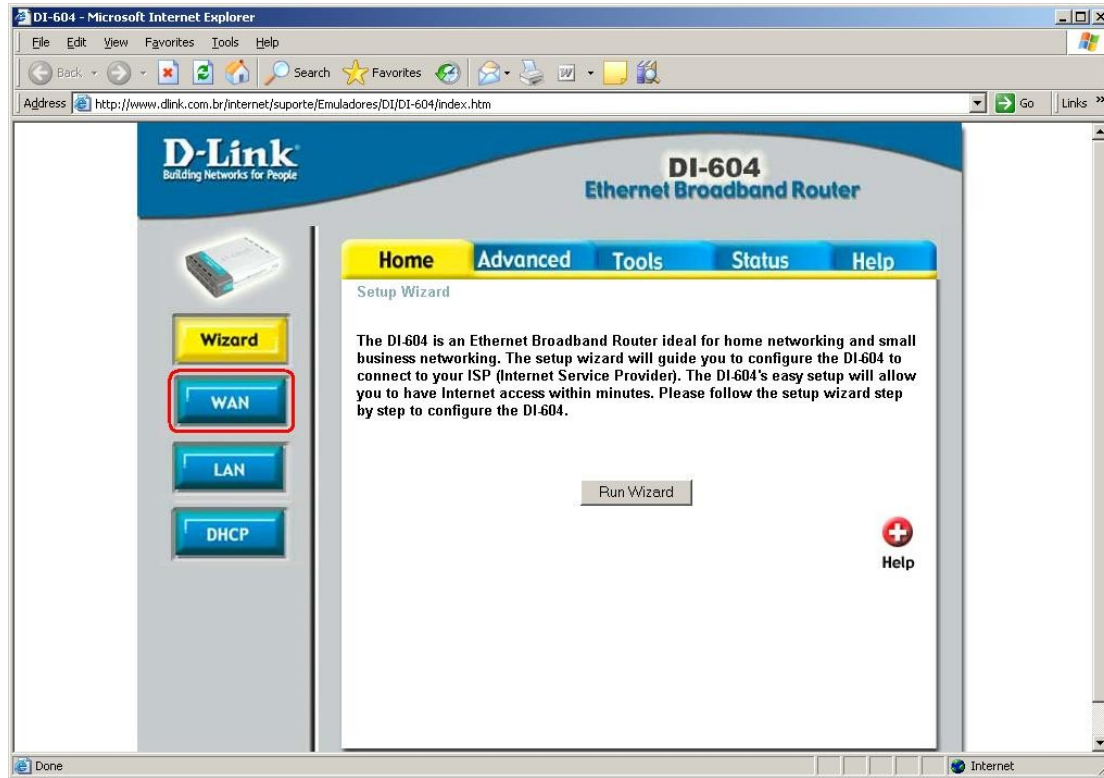
Senha: **(sem preenchimento)**

Após digitado nome de usuário e senha, clique no botão **OK**.



2. O navegador abrirá a tela de configurações do Internet Server DI-604.

Clique no botão **WAN**.



3. Será exibida a tela de configurações **WAN** do Internet Server.

Selecione a opção **PPPoE**.

User Name: e-mail do provedor(ex: usuario@provedor.com.br)

Password: digite a senha do e-mail

Retype Password: confirme a senha

Clique no botão **Apply** para aplicar as configurações.

The screenshot shows the configuration interface for a D-Link DI-604 Ethernet Broadband Router. The page is titled "DI-604 Ethernet Broadband Router" and has a navigation menu with "Home", "Advanced", "Tools", "Status", and "Help". The "Advanced" tab is selected, and the "WAN Settings" section is active. The "WAN Settings" section contains a message: "Please select the appropriate option to connect to your ISP." Below this message are five radio button options: "Dynamic IP Address", "Static IP Address", "PPPoE", "Others", and "PPTP". The "PPPoE" option is selected and highlighted with a red box. Below the "PPPoE" option are two sub-options: "PPTP" and "BigPond Cable". The "PPPoE" section is further divided into "Dynamic PPPoE" (selected) and "Static PPPoE". Below these options are several input fields: "User Name" (filled with "usuario@provedor.com.br"), "Password" (filled with "*****"), "Retype Password" (filled with "*****"), "Service Name" (empty), "IP Address" (filled with "0.0.0.0"), "Primary DNS Address" (filled with "192.152.81.1"), "Secondary DNS Address" (filled with "192.168.10.200"), "Maximum Idle Time" (filled with "0" and "Minutes"), "MTU" (filled with "1492"), and "Auto-reconnect" (selected "Enabled"). At the bottom right of the configuration area are three buttons: "Apply" (with a green checkmark icon), "Cancel" (with a red X icon), and "Help" (with a red plus icon).



4. A configuração foi realizada com sucesso.

Clique no botão **Continue** para Continuar.

