

DI-LB604 Configuração em modo Dynamic

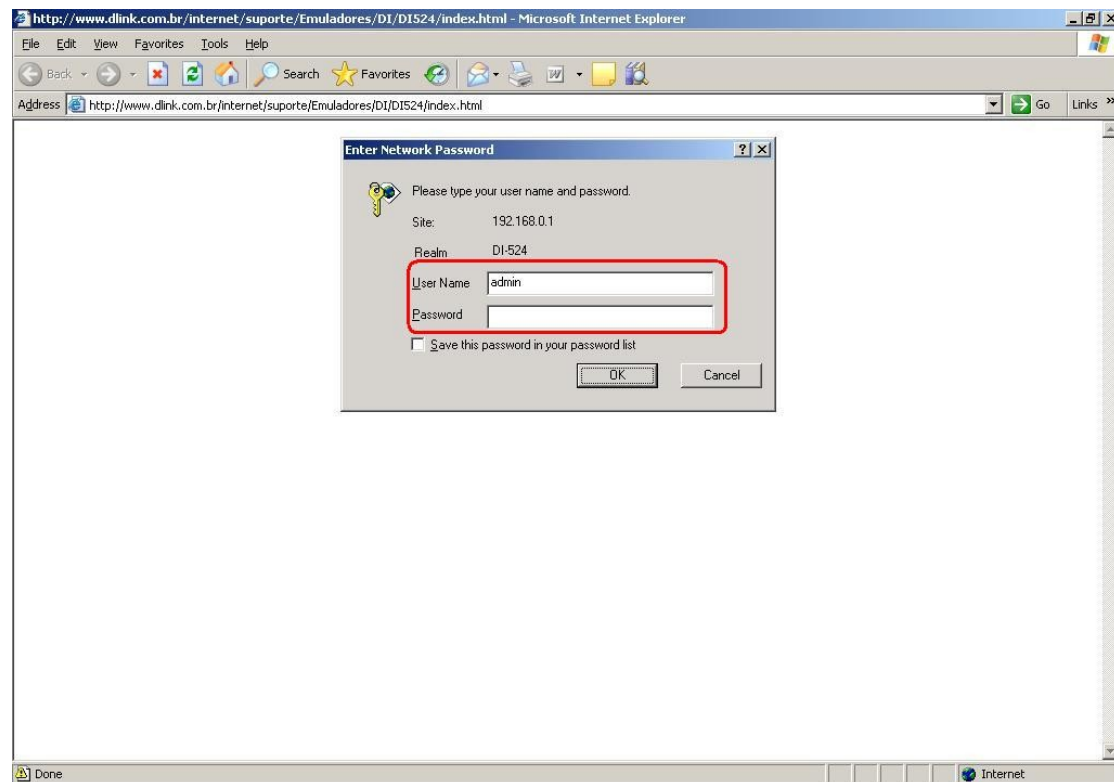
1. Acesse as configurações do Internet Server através do navegador de Internet:

Na barra de endereços do navegador digite: **192.168.0.1** e pressione a tecla **ENTER**. Abrirá uma caixa de texto solicitando nome de usuário e senha.

Nome de usuário: **admin**

Senha: **(sem preenchimento)**

Após digitado nome de usuário e senha, clique no botão **OK**.





2. O navegador abrirá a tela de configurações do Internet Server DI-LB604.

Clique no botão **WAN**.

D-Link
Building Networks for People

Express EtherNetwork
DI-LB604 Dual-WAN Load Balancing Router

Home Advanced Tools Status Help

Setup Wizard

The DI-LB604 is a Dual WAN Load Balancing Router ideal for home networking and small business networking. The setup wizard will guide you to configure the DI-LB604 to connect to your ISP (Internet Service Provider). The DI-LB604's easy setup will allow you to have Internet access within minutes. Please follow the setup wizard step by step to configure the DI-LB604.

Run Wizard

Help



3. Será exibida a tela de configurações **WAN** do Internet Server.

Interface: Selecione a interface que irá receber o sinal de WAN(ex: **WAN 1**).

Connect Mode: selecione **Enable**.

Connect Type: selecione a opção **Dynamic IP**.

Clique no botão **Apply** para aplicar as configurações.

The screenshot shows the configuration page for a D-Link Express EtherNetwork DI-LB604 Dual-WAN Load Balancing Router. The page has a navigation menu with 'Home', 'Advanced', 'Tools', 'Status', and 'Help'. On the left, there are buttons for 'Wizard', 'WAN', 'LAN', 'DHCP', and 'Load Balance'. The main content area is titled 'Connection' and contains the following fields:

- Interface:** WAN 1 (selected in a dropdown menu)
- Connect Mode:** Disable, Enable, Backup
- Connect Type:** Dynamic IP (selected in a dropdown menu)
- PPTP Connection:** Enable
- Backup of:** WAN2
- PPTP Dailup:**
 - PPTP Server IP Address:** 0.0.0.0
 - User Name:** [empty]
 - Password:** [empty]
 - Static IP Address:** 0.0.0.0 (only for static ISP account)
 - PPTP MTU:** 1400 Bytes
- DNS (Optional for dynamic IP):**
 - Server 1:** 0.0.0.0
 - Server 2:** 0.0.0.0
 - Server 3:** 0.0.0.0
- Optional:**
 - Host Name:** DBG4CC801
 - Domain Name:** [empty]
 - MAC Address:** 00-15-E9-4C-C8-01

At the bottom right, there are three buttons: 'Apply' (with a green checkmark), 'Cancel' (with a yellow X), and 'Help' (with a blue question mark). The 'Apply' button is highlighted with a red box.

4. A configuração foi realizada com sucesso.