

DI-LB604 Configuração em modo Static IP Address

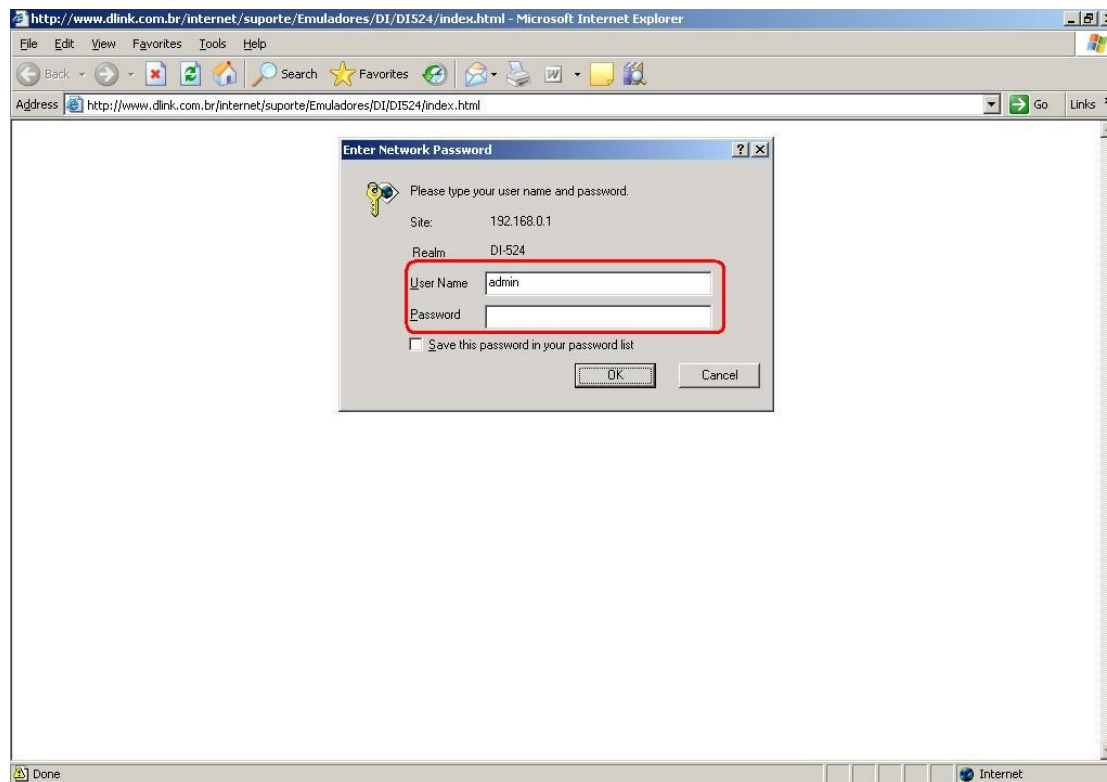
1. Acesse as configurações do Internet Server através do navegador de Internet:

Na barra de endereços do navegador digite: **192.168.0.1** e pressione a tecla **ENTER**. Abrirá uma caixa de texto solicitando nome de usuário e senha.

Nome de usuário: **admin**

Senha: **(sem preenchimento)**

Após digitado nome de usuário e senha, clique no botão **OK**.





2. O navegador abrirá a tela de configurações do Internet Server DI-LB604.

Clique no botão **WAN**.

D-Link
Building Networks for People

Express Ethernet
DI-LB604 Dual-WAN Load Balancing Router

Home | Advanced | Tools | Status | Help

Setup Wizard

The DI-LB604 is a Dual WAN Load Balancing Router ideal for home networking and small business networking. The setup wizard will guide you to configure the DI-LB604 to connect to your ISP (Internet Service Provider). The DI-LB604's easy setup will allow you to have Internet access within minutes. Please follow the setup wizard step by step to configure the DI-LB604.

Run Wizard

Help



3. Será exibida a tela de configurações **WAN** do Internet Server.

Interface: Selecione a interface que irá receber o sinal de WAN(ex: **WAN 1**).

Connect Mode: selecione **Enable**.

Connect Type: selecione a opção **Static IP**.

IP Address: digite o endereço IP(ex: 200.89.100.138)

Subnet Mask: digite a máscara de sub-rede(ex: 255.255.255.0)

Gateway: digite o IP do Gateway Padrão(ex: 200.89.100.1)

Server 1: digite o DNS Primário(ex: 200.204.0.10)

Server 2: digite o DNS Secundário(ex: 200.204.0.138)

Clique no botão **Apply** para aplicar as configurações.

The screenshot shows the WAN configuration page for a D-Link DI-LB604 Dual-WAN Load Balancing Router. The page is titled "Express Ethernet" and "DI-LB604 Dual-WAN Load Balancing Router". The navigation tabs are "Home", "Advanced", "Tools", "Status", and "Help". The "Advanced" tab is selected, and the "WAN" sub-tab is active. The "Connection" section includes a dropdown for "Interface" set to "WAN 1", "Connect Mode" with radio buttons for "Disable", "Enable" (selected), and "Backup", and "Connect Type" set to "Static IP". The "PPTP Connection" checkbox is unchecked, and "Backup of" is set to "WAN2". The "Address Information" section has input fields for "IP Address" (200.89.100.138), "Subnet Mask" (255.255.255.0), and "Gateway" (200.89.100.1). The "PPTP Dialup" section includes fields for "PPTP Server IP Address" (0.0.0.0), "User Name", "Password", "Static IP Address" (0.0.0.0), and "PPTP MTU" (1400 Bytes). The "DNS (Optional for dynamic IP)" section has "Server 1" (200.204.0.10), "Server 2" (200.204.0.138), and "Server 3" (0.0.0.0). The "Optional" section includes "Host Name" (DBG4CC801), "Domain Name", and "MAC Address" (00-15-E9-4C-C8-01). At the bottom, there is a "Port Options" button and three action buttons: "Apply" (checked), "Cancel", and "Help".



4. A configuração foi realizada com sucesso.